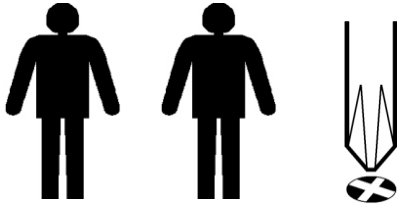


ASSEMBLY INSTRUCTIONS.

IMPORTANT - RETURN FOR FUTURE REFERENCE - READ CAREFULLY.

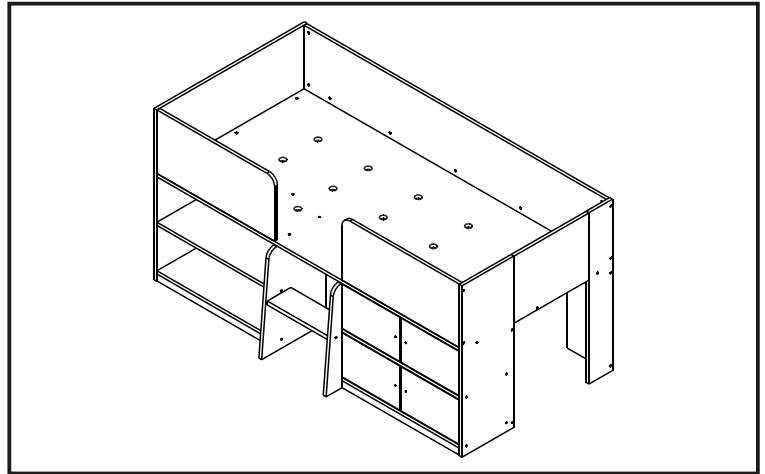
Tools Needed



Helpline

If you have any problems with this product or require any replacement fittings please contact Customer Services Tel: 0333 777 8999

Regrettably self assembly items cannot be returned once assembly is part or fully completed unless the item is found to be faulty. Should you need to return the unassembled product, please repack in the original packaging.



IMPORTANT

- We suggest you spend a short time reading through this leaflet and then follow the simple step by step instructions.
- Carefully check that you have all parts before beginning assembly.
- Keep fittings out of children's reach and keep children well away from the construction area.
- We recommend that the packaging is used to protect the surfaces during assembly.
- A minimum of 2 persons is required to assemble this product.

PRODUCT INFORMATION

- Made in Poland.

CARE INSTRUCTIONS

- For general cleaning, periodically dust with a soft cloth.
- Do not rub or scrub the surface when cleaning.
- Always use a non-silicone based furniture polish. Silicone in furniture polishes can break down the lacquer finish.
- Any spills should be removed immediately with a soft clean damp cloth and dried immediately.
- Avoid keeping furniture in direct sunlight or close to any heat sources as this can cause cracking, discolouration or warping.
- Never drag pieces of furniture across the floor as this will cause damage to the joints.
- All assembly fixings should always be tightened properly and periodically check all fixings and tighten if necessary.
- The finish will mellow and change colour over time.

IMPORTANT! KEEP FOR FUTURE REFERENCE

WARNING Do not place this child's bed near heat sources, windows and other furniture.

WARNING Do not use this child's bed if any part is broken, torn or missing.

WARNING Not suitable for children under 4-years.

1. Recommended mattress size 2000x900x120mm
2. Follow the manufacturer's assembly instructions in detail to ensure the safety features of the bed are not compromised.
3. To ensure the safety, regularly check all the connecting bolts and glide pins making sure they are tight, care should be taken that no screws are loose.
4. Children are likely to play, bounce, jump and climb on beds, therefore this child's bed should not be placed too close to other furniture or windows, blind cords, curtain pulls or other furniture or other strings or cords, and should be placed either tight to any wall or have a gap of 300mm between the wall and the side of the bed.

Assembly Instruction

DESCRIPTION: 859953 COMPTON FOIL CABIN BED

2 hrs

APPROXIMATE ASSEMBLY TIME

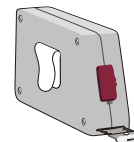
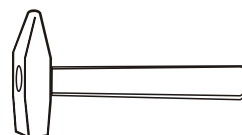
2 PERSON ASSEMBLY



FLOOR AREA
2.5 M x 2,5 M

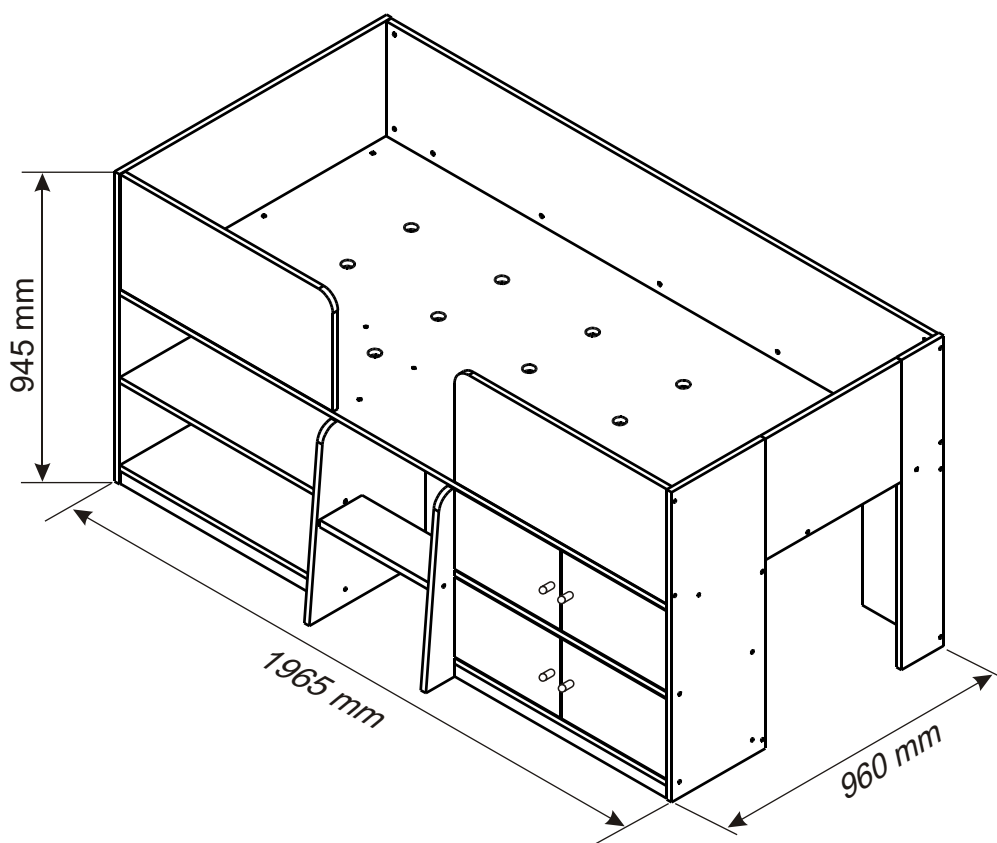


REQUIRED ASSEMBLY SPACE



REQUIRED ASSEMBLY TOOLS

ASSEMBLED DIMENSIONS



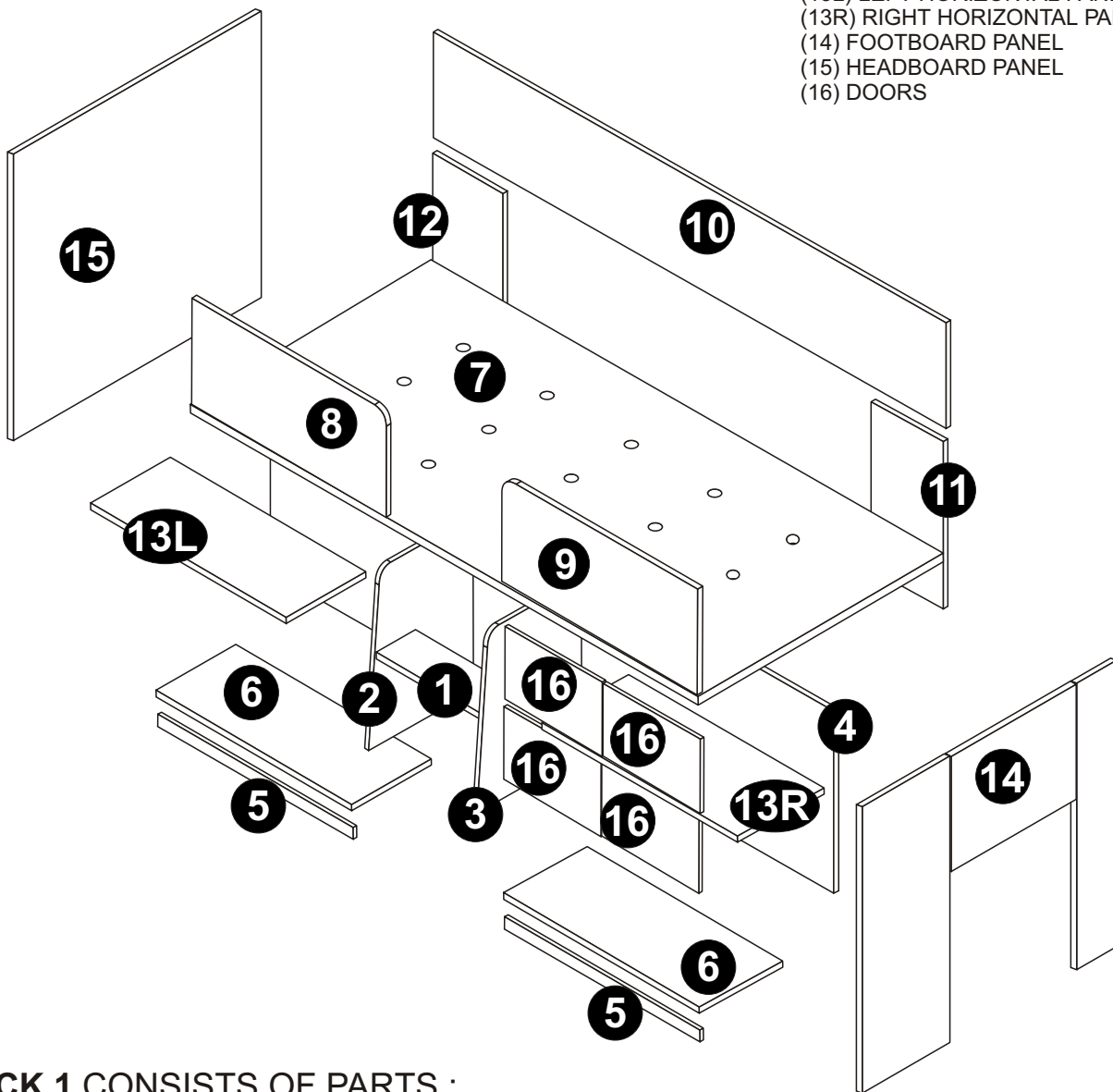
Assembly Instruction

DESCRIPTION:

859953 COMPTON FOIL CABIN BED

PARTS LIST

NO.	PART LIST	QTY
(1)	RUNG	1
(2)	LEFT RUNG SIDE	1
(3)	RIGHT RUNG SIDE	1
(4)	LONG VERTICAL PANEL	1
(5)	PLINTH	2
(6)	BOTTOM PANEL	2
(7)	BOTTOM	1
(8)	LEFT SHORT RAIL	1
(9)	RIGHT SHORT RAIL	1
(10)	LONG RAIL	1
(11)	RIGHT VERTICAL PANEL	1
(12)	LEFT VERTICAL PANEL	1
(13L)	LEFT HORIZONTAL PANEL	1
(13R)	RIGHT HORIZONTAL PANEL	1
(14)	FOOTBOARD PANEL	1
(15)	HEADBOARD PANEL	1
(16)	DOORS	4



PACK 1 CONSISTS OF PARTS :

1,2,3,4,6,9,10,12,13,14,15,16

Fittings.

PACK 2 CONSISTS OF PARTS :

5,7,8,11

Top Tips before you start!

1. Please check that all parts are present before you start the assembly of your furniture, as once assembled, the furniture is exempt from our home approval policy.
2. For ease and speed of assembly, we recommend that before you commence each step of the assembly, that you identify all the parts required for that step.
3. For larger items, please ensure that you have sufficient space and people (as indicated on page 1) to assemble your product safely.
4. We recommend that, where possible, all items are assembled near to the area in which they will be placed in use, to avoid moving the product unnecessarily once assembled.
5. For the protection of your furniture, particularly items of high gloss finish, we recommend that the product is placed on a protected surface during assembly to prevent any damage.
6. During assembly please take care not to over-tighten any fittings, as this may damage the product .

Care and Maintenance of your Furniture

Please periodically check all fittings and re-tighten as necessary.

Please do not jump on your furniture.

To clean your item, please use a damp cloth and wipe clean.

Never allow any kind of liquid to remain on your furniture. Absorption can cause wood to warp or finishes to de-laminate.

Assembly Instruction

DESCRIPTION:

859953 COMPTON FOIL CABIN BED



WHEN FITTING CAMS
ENSURE STARTING POSITION IS CORRECT
BEFORE YOU INSERT CONNECTING BOLT
TURN CLOCKWISE UNTIL SECURE

CORRECT **WRONG**

1 SCREW IN CAM SCREWS
ONLY DOWN TO FIRST RING.

FLUSH
WITH
PANEL

2 PRESS IN CAM LOCKS. ARROW ON CAM
LOCK MUST FACE HOLE IN PANEL EDGE.

DO NOT INSERT DOWELS
IN CAM SCREW / LOCK HOLES.

3 PRESS PANELS TOGETHER ALIGNING
DOWEL WITH HOLES, CAM SCREWS WITH LOCKS.

4 TO SECURE PANELS,
TURN CAM LOCKS 1/2 TURN CLOCKWISE.

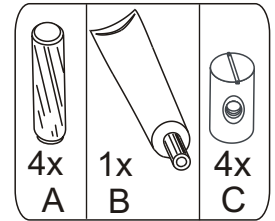
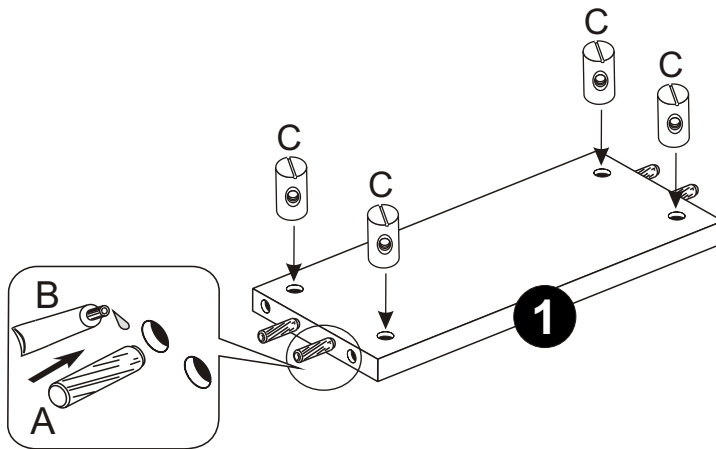
CAM SHOWN IN
LOCKED POSITION.

Assembly Instruction

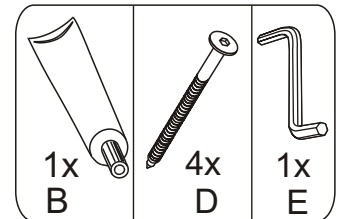
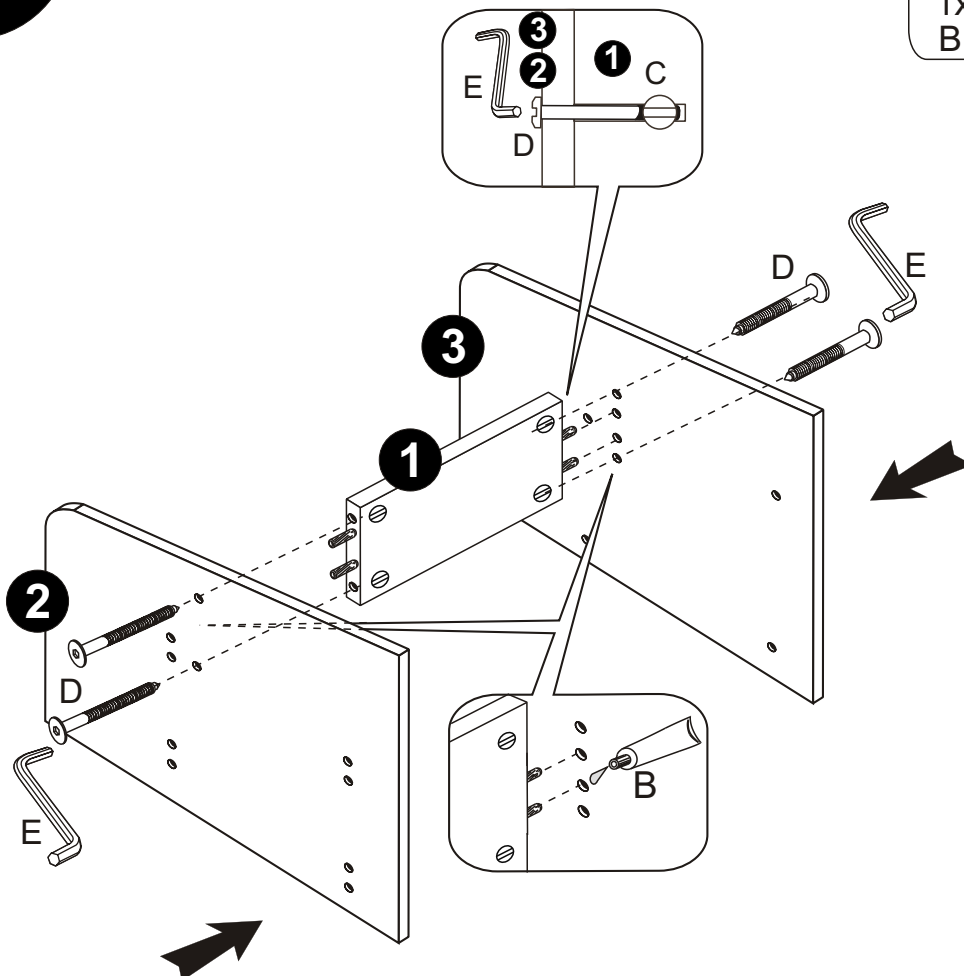
DESCRIPTION:

859953 COMPTON FOIL CABIN BED

1



2

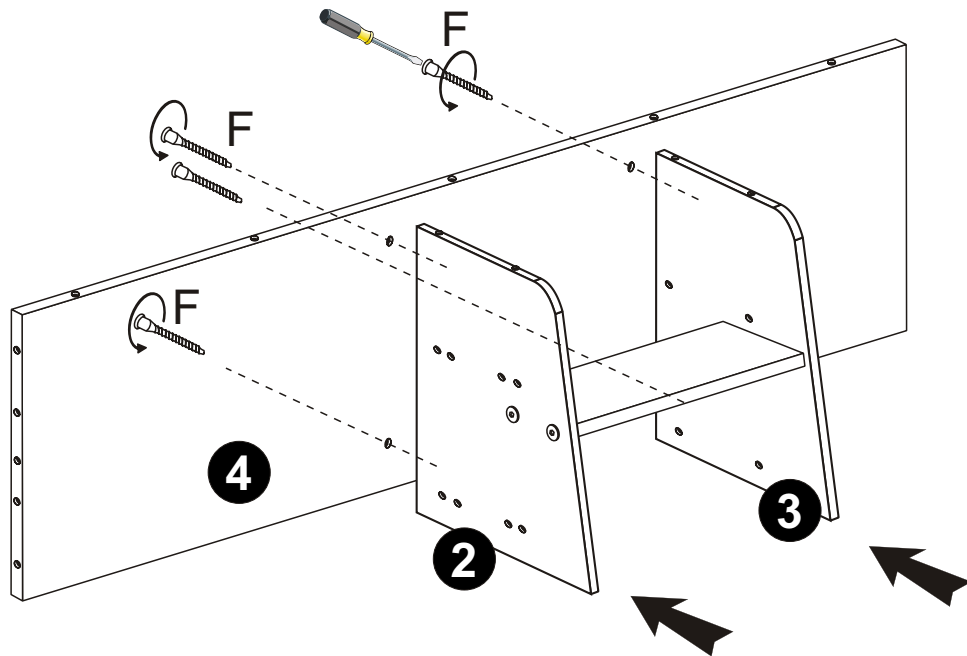


Assembly Instruction

DESCRIPTION:

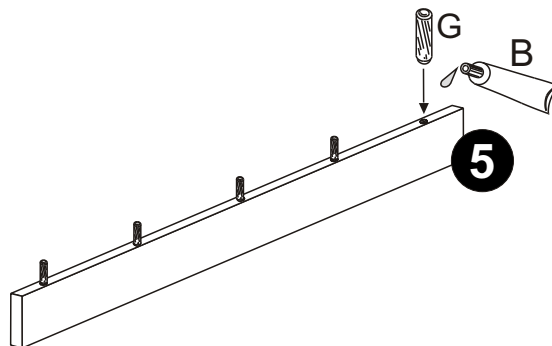
859953 COMPTON FOIL CABIN BED

3



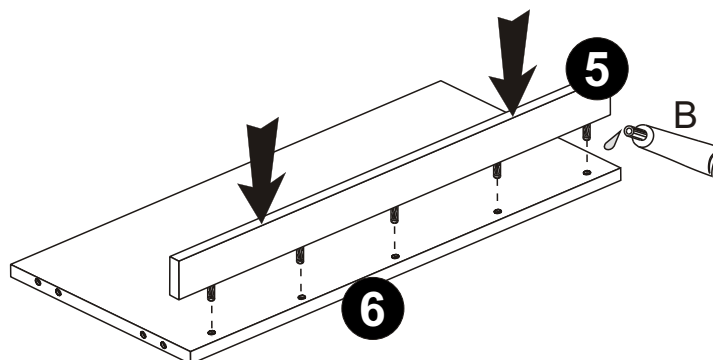
4

DO THIS STEP TWICE (2x)



5

DO THIS STEP TWICE (2x)

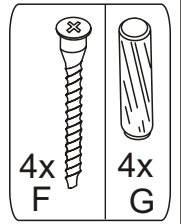
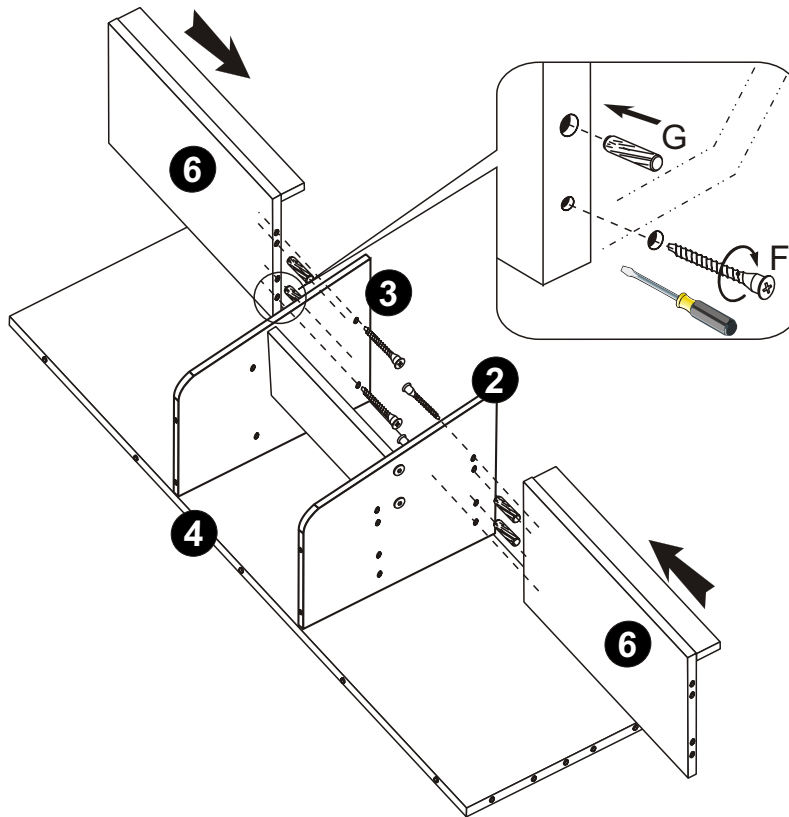


Assembly Instruction

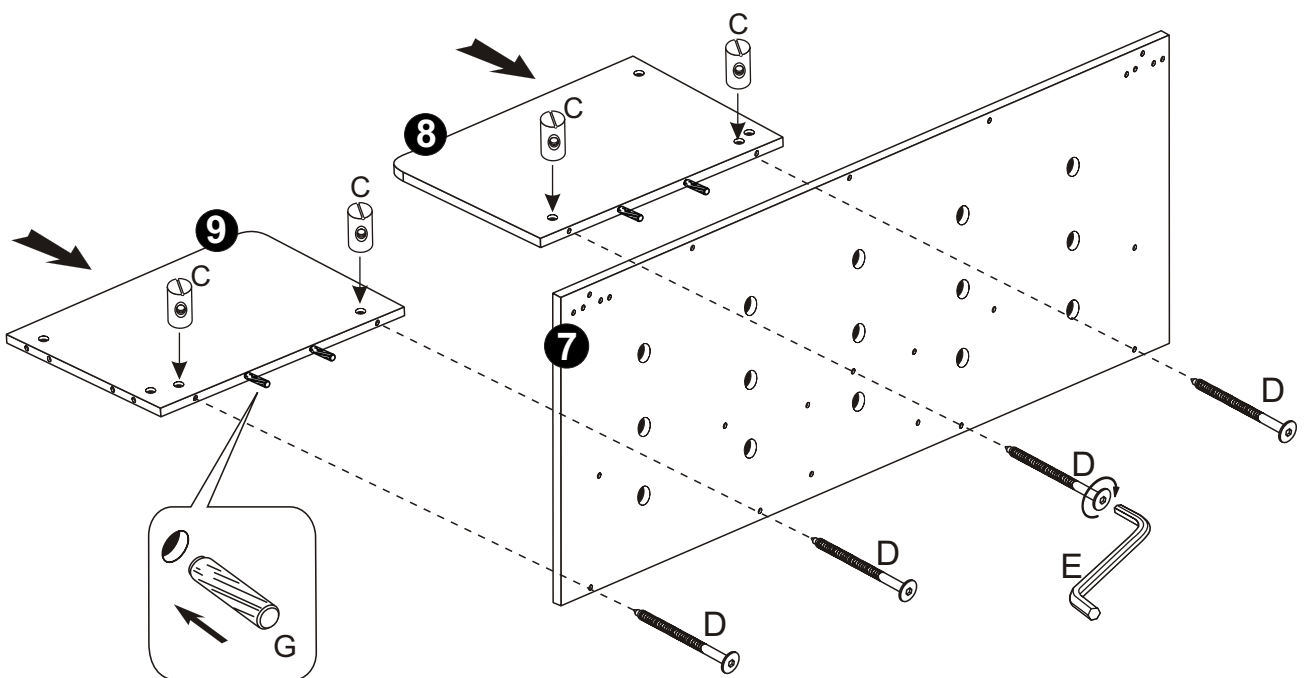
DESCRIPTION:

859953 COMPTON FOIL CABIN BED

6



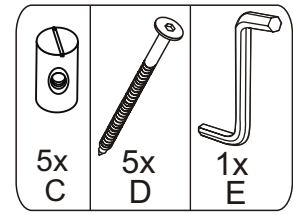
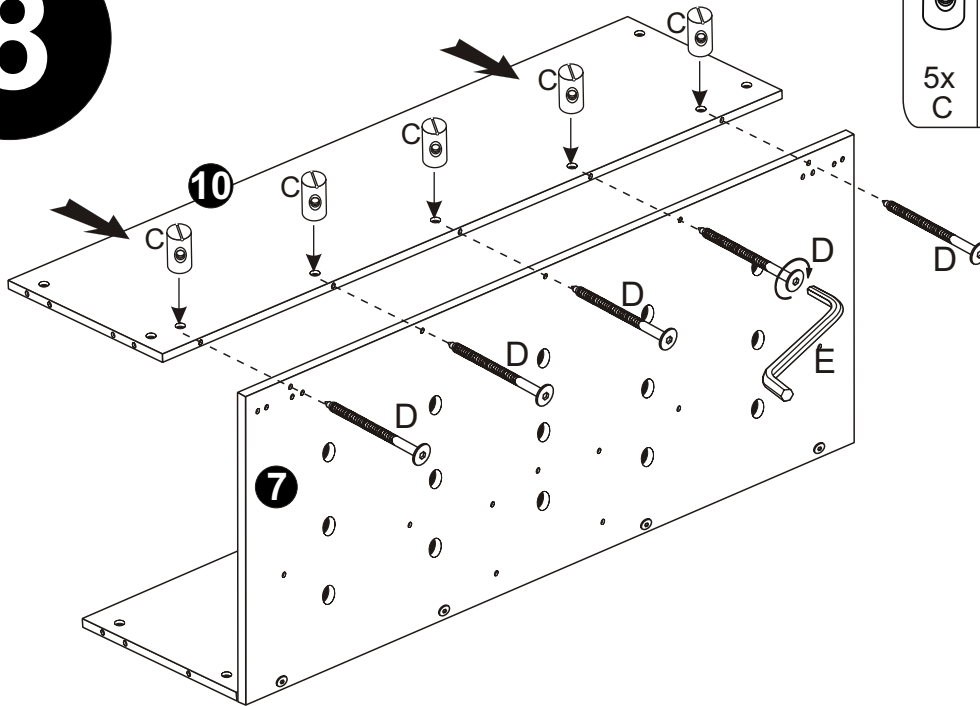
7



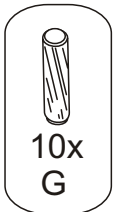
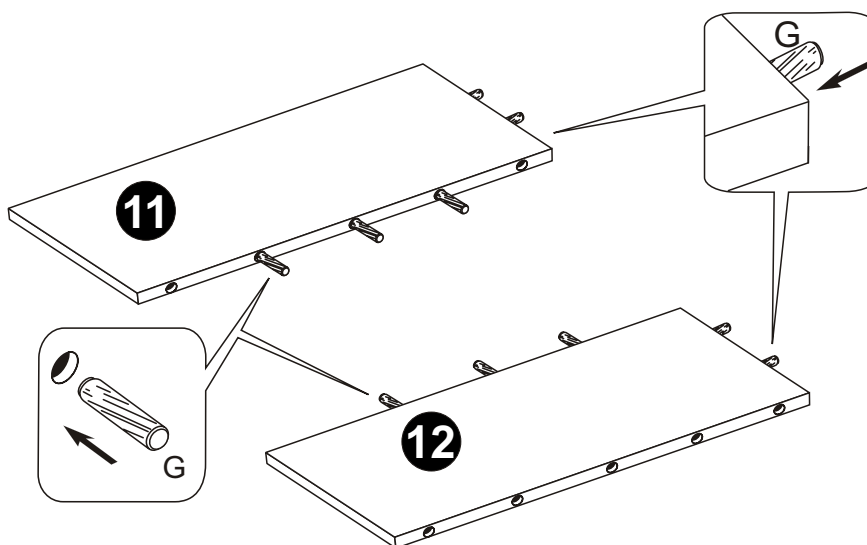
Assembly Instruction

DESCRIPTION: 859953 COMPTON FOIL CABIN BED

8



9

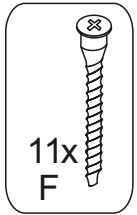
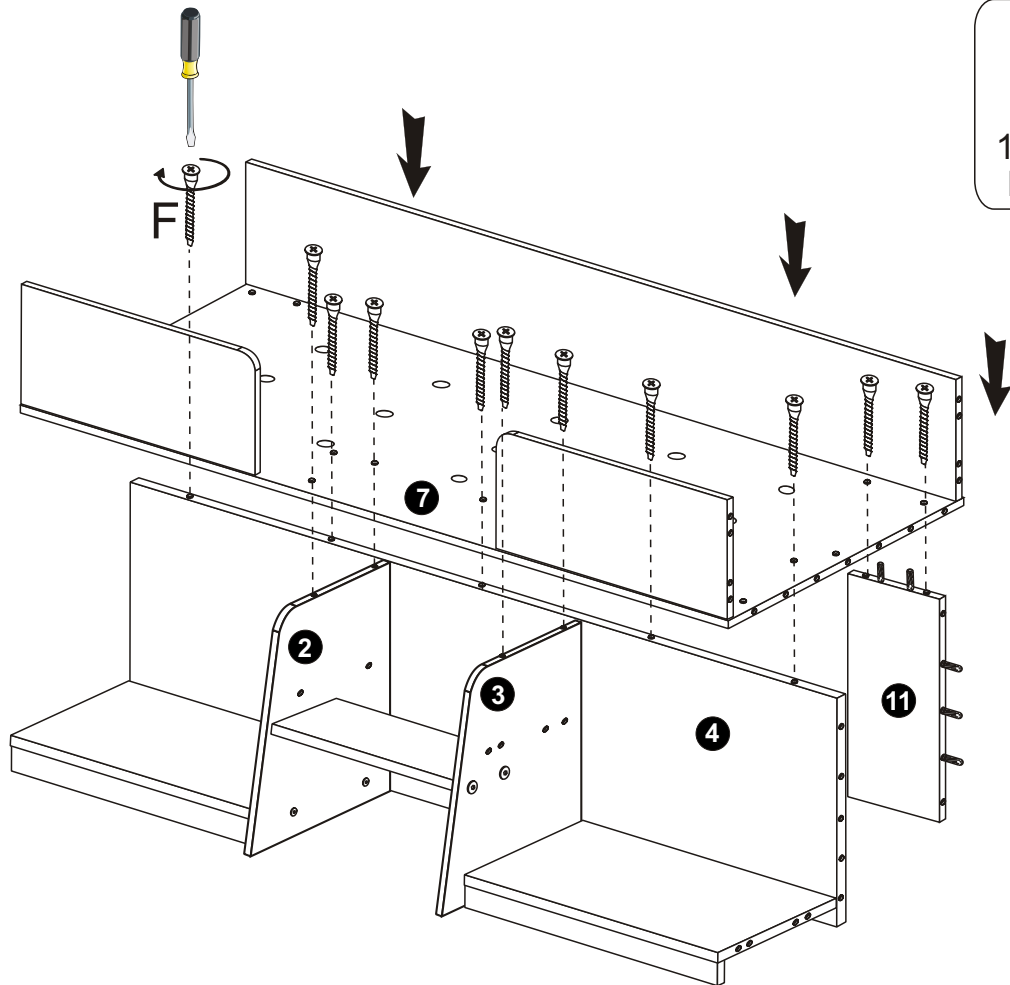
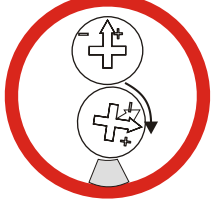


Assembly Instruction

DESCRIPTION: 859953 COMPTON FOIL CABIN BED

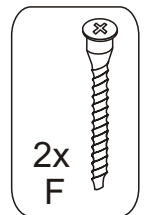
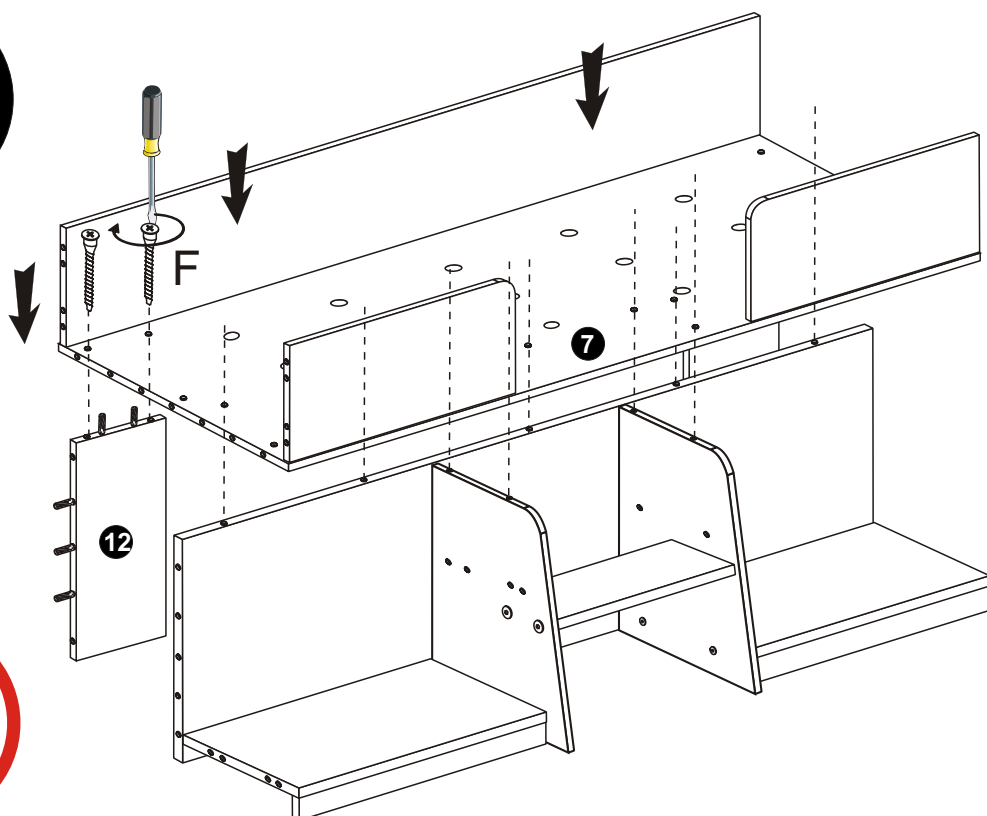
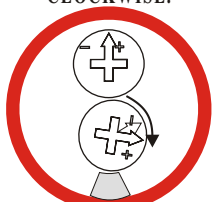
10

1/4 TURN
CLOCKWISE.



11

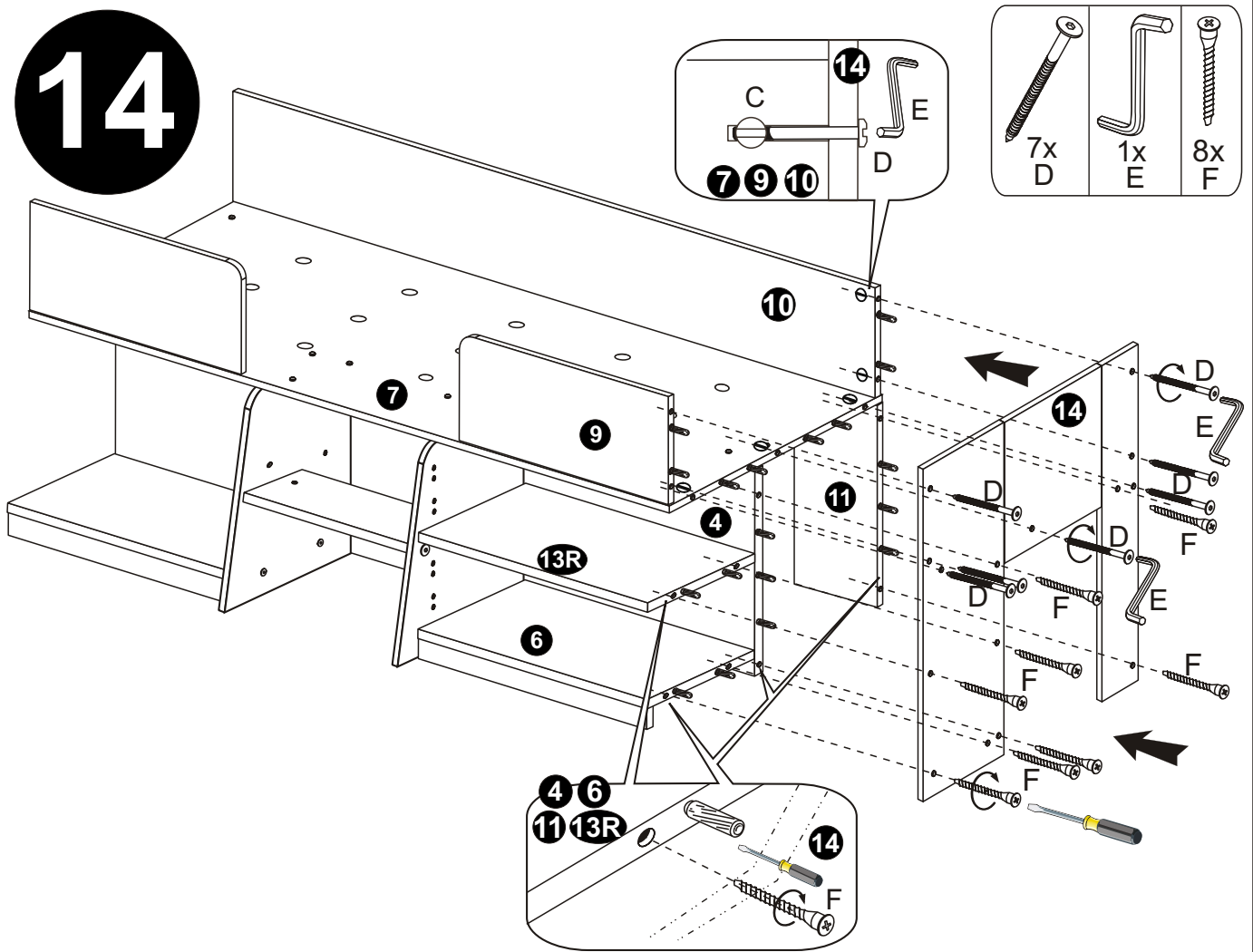
1/4 TURN
CLOCKWISE.



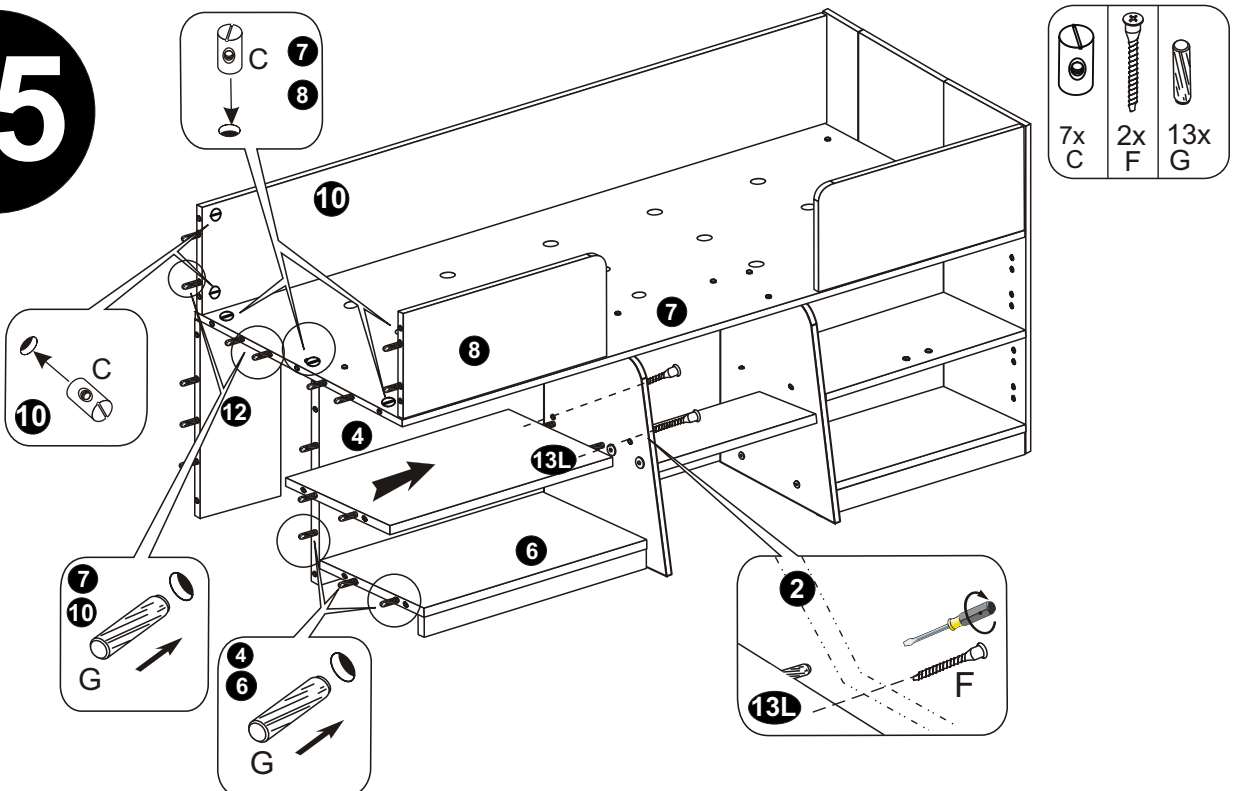
Assembly Instruction

DESCRIPTION: 859953 COMPTON FOIL CABIN BED

14



15

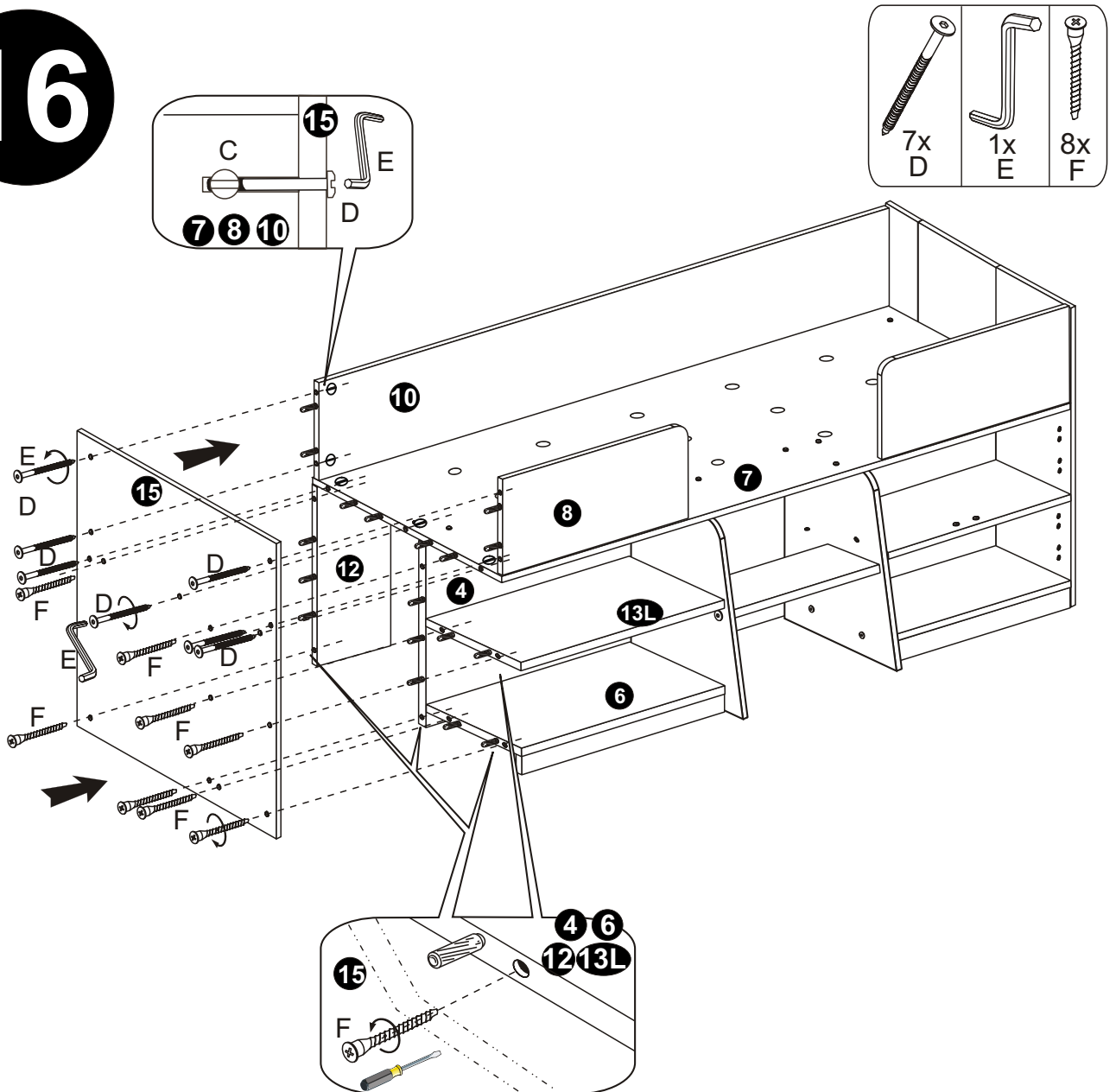


Assembly Instruction

DESCRIPTION:

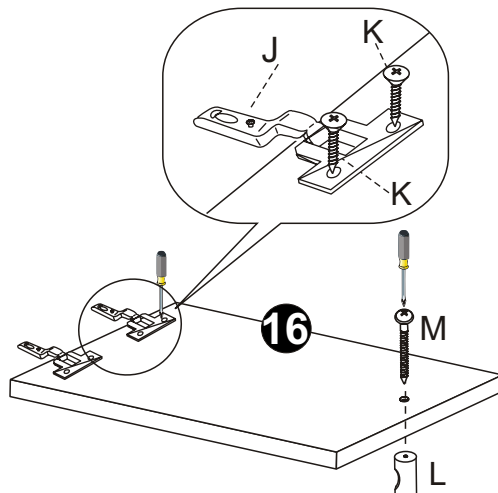
859953 COMPTON FOIL CABIN BED

16



17

DO THIS STEP FOUR TIMES (4x)

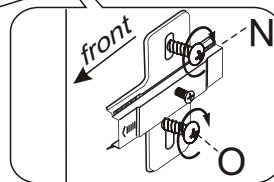
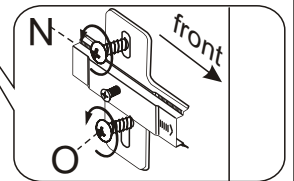
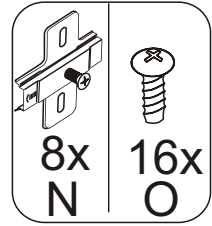
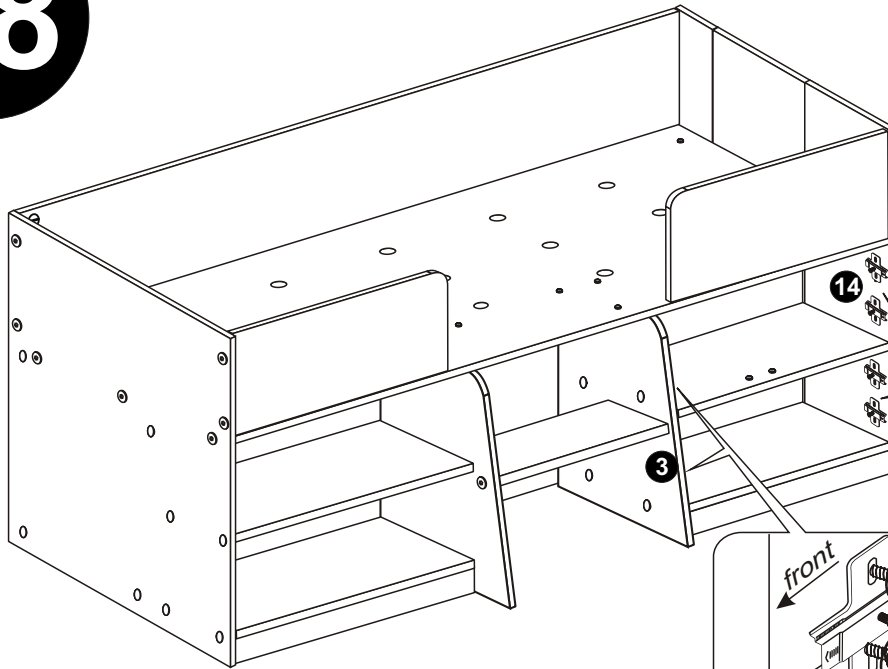


Assembly Instruction

DESCRIPTION:

859953 COMPTON FOIL CABIN BED

18



19

