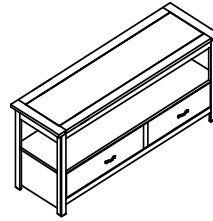


Care Instructions

Please keep this instruction for future reference.



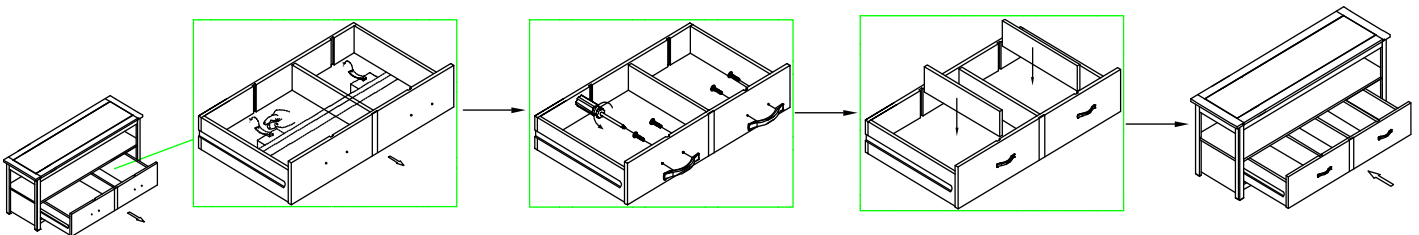
Helpline

If you have any problems with this product or require any replacement fittings please contact
Customer Services Tel: 0844 844 8999

Notice

Handles are stored inside drawers. Remove drawer, unscrew handle and re-attach to face of drawer.

Attach furniture to the wall for safety.



Product Information

- . Made from solid pine, MDF & particle board with oak veneer and NC finish.
- . Natural features ensure that each piece is individual. Every effort is made to ensure colour continuity between pieces, however this is a natural product, slight colour variations and natural grain markings may occur.
- . The Hampshire range is manufactured from a carefully selected grade of pine that contains many naturally occurring variations such as knots and prominent grain to give a natural look.
- . Made in China

Care Instructions

- . For general cleaning, periodically remove dust with a soft cloth.
- . Always use a non-silicone based furniture polish. Silicone in furniture polishes can break down the lacquer finish.
- . Do not rub or scrub the surface when cleaning.
- . Any spills should be removed immediately with a soft clean damp cloth and dried immediately.
- . Ensure the product is protected with mats and coasters when items are placed on to its surface, to prevent scratching or damage. Do not put hot dishes directly onto surfaces.
- . Avoid keeping furniture in direct sunlight or close to any heat source as this can cause cracking, discolouration or warping.
- . Never drag pieces across the floor as this could cause damage to the joints.
- . Periodically check all fixings and tighten if necessary.
- . Wood will mellow and change colour over time; we recommend that ornaments are moved regularly to prevent uneven mellowing.

Should you need to return the product for any reason, please repack in the original packaging.

Next Retail Ltd, Desford Road, Enderby, Leicester, LE19 4AT